

Small scale A/R project activities **Simplified methodology**

Carmenza Robledo,
Jürgen Blaser
INTERCOOPERATION



Hilfe2

Diese Folie enthält zwei Mastergruppen (Master und Titelmaster), welche den Corporate-Design-konformen Auftritt definieren. Der jetzt zugewiesene Empa-Master 1 sieht für die Titelfolie das Empa-Logo vor. Den weiteren Folien ist kein Logo zugewiesen. Für längere Vorträge mit Zwischentiteln empfehlen wir, den Folien mit Zwischentiteln den Empa-Master 2 (mit Logo unten rechts) zuzuweisen. Dazu öffnen Sie via Ansicht > Aufgabenbereich > Foliendesign-Entwurfsvorlage rechts die Masterauswahl. Nun markieren Sie im linken Ansichtsfenster die Folien, denen Empa-Master 2 zugewiesen werden soll (mindestens zwei, ansonsten für den ganzen Satz Empa-Master 1 verwendet wird). Weitere Hilfe erhalten Sie bei Monika Ernst, 4995 (Empa, Dübendorf)

M. Ernst, 2/4/2005



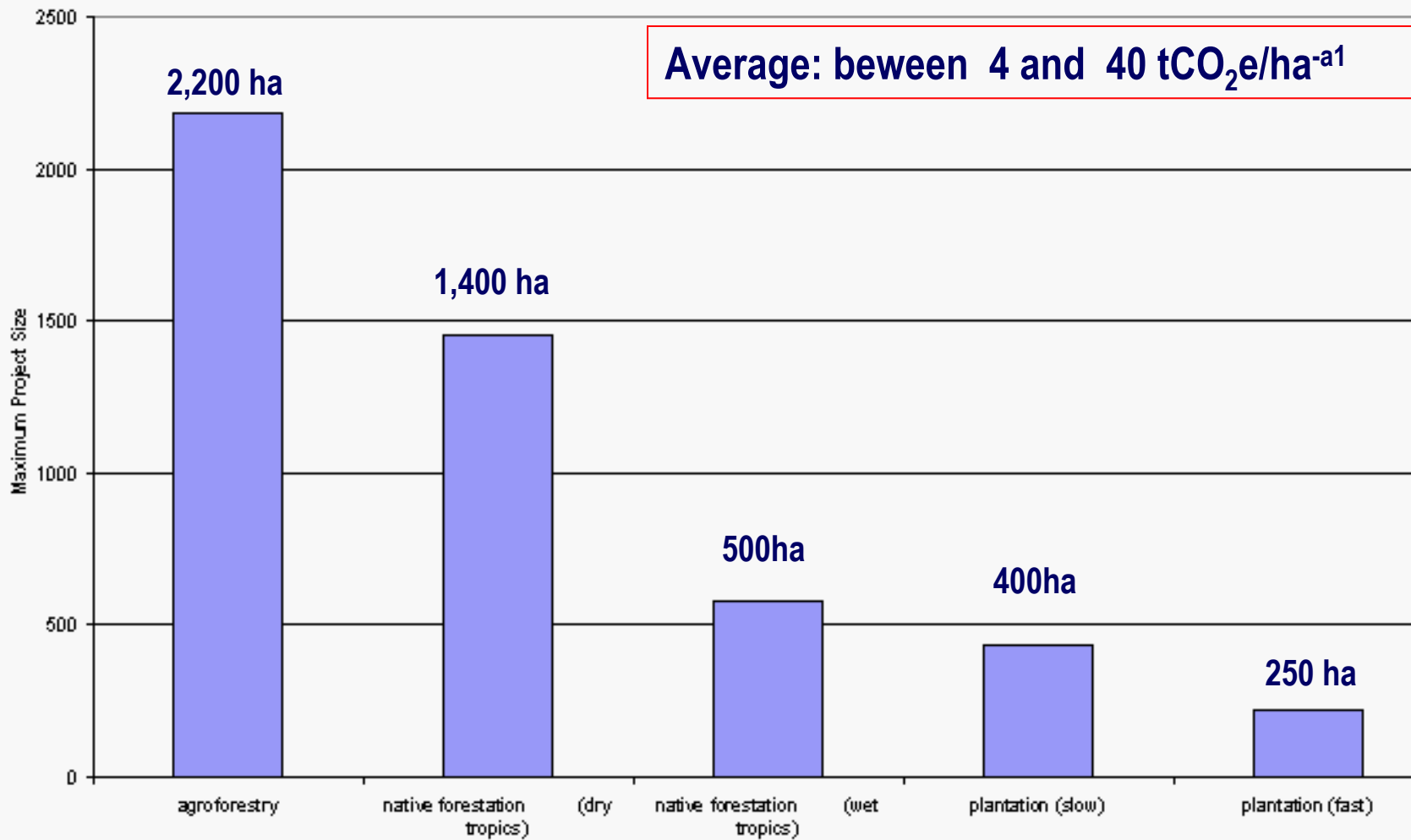
Definition



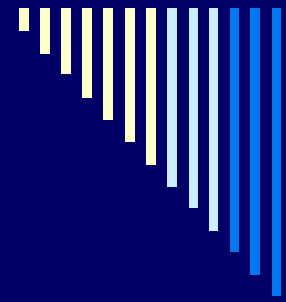
A/R SSC results when :

- a) The net anthropogenic removals by sinks are equal or less than **an average 8 KT of CO_{2e} per year** within each verification period
- b) Are developed or implemented by low income communities or individuals as defined by the host country
- c) If there is an excess in removals these won't be considered

What does that mean: 8KTCO₂e?

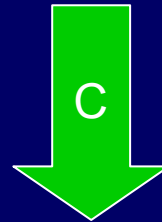


General guidance



Athmosphere

Source
(emission)



Sinks



Soil

Pools:

- Above ground biomass
- Below ground biomass

- ~~-Litter~~
- ~~-Dead wood~~
- ~~-Organic soil~~



General guidance

- **The GHG emissions resulting from operating the project activities are considered no-significant (transportation, equipment). There is no need to calculate that**
- **For those cases where local or national data is not available PPs can use the IPCC default values**



Simplified baseline methodology (1)

- Pre-project activities considered in the methodology:**
 - Pasture**
 - Agricultural land (low levels of production)**

- Stratification shall be done following the procedures described in the GPG-LULUCF of the IPCC**



Simplified baseline methodology (2)

(Expert judgement)

Nos significant changes
In C pools are expected

Significant changes in C
can be expected

Assess the current C content

a) Decrease

b) Increase

It is considered to be constant
(no changes in C)

$\Delta C = 0$

Use the simplified
baseline methodology

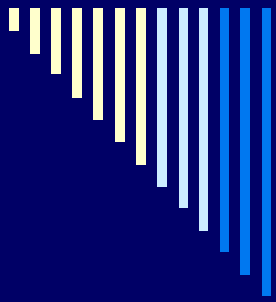


Simplified baseline methodology (3)

□ For ex.

-*ante* estimation of the net anthropogenic removals by sinks the approved methodology provides formula for:

- Estimating the net baseline by sinks
- Estimating the actual net removals by sinks



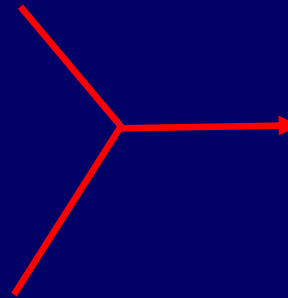
Simplified baseline methodology (4) – Leakages

If

**There is a displacement of people
> al 10% due to the A/R Project
activity**

o

**Due to the A/R project activity
there is a reduction in the
main product > 10%**



**There are leakages.
It corresponds to 15%
of the potential C**

If one of the above mentioned indicators is superior to 50% it is assumed that there is no possibility to calculate the leakages and therefore the potential net anthropogenic sinks in the project



Simplified baseline methodology (5) – other GHG

- Other GHG emissions: Are considered only the emissions of N₂O as a consequence of fertilization**
- Must be calculated only if emissions are supposed to be superior to 10% of the C potential of the project (=8000T/year)**
- If it's the case, it must be calculated according to the formula and procedures en la GBP forestales del IPCC**



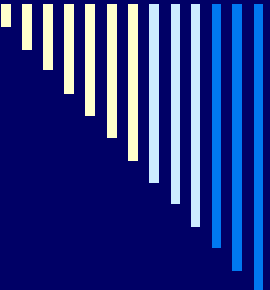
Methodology for Monitoring (1)

- No need to monitor the baseline
- The stratification must be the same as the one used for the baseline
- The document contains formula and procedures to calculate the ex post quantity of C within project's boundary
 - Estimate baseline net GHG removal by sinks
 - Estimate actual net GHG removals by sinks



(2) Methodology for Monitoring - Leakages

- The PP have to monitor if the defined criteria for leakages exceed the threshold of 10% during the project implementation and as a consequence of it.**
- If this happens 15% of the net antropogenic value of C removals has to be discounted**
- If the value is superior to 50%, it is considered impossible to calculate net anthropogenic GHG removals**



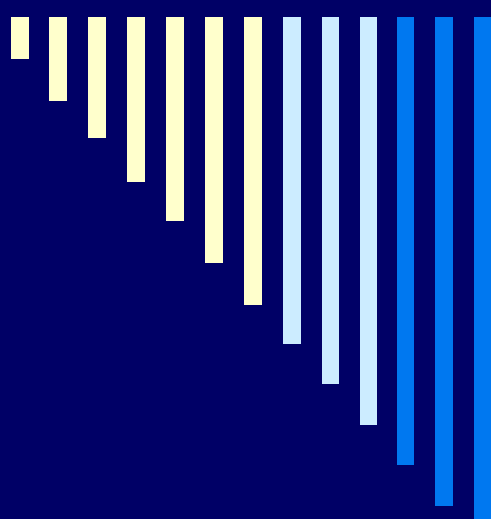
(3) Methodology for Monitoring - other GHG

- If Project Proponents expect N₂O emissions > 10%, they must be calculated according to the procedures of the IPCC forest GBP**

More...

- ❑ **Formats for data collection**
- ❑ **Procedures for the quality control**
- ❑ **Procedures to check samples**
- ❑ **Procedures to analyse datas**
- ❑ **Maintenance of datas**



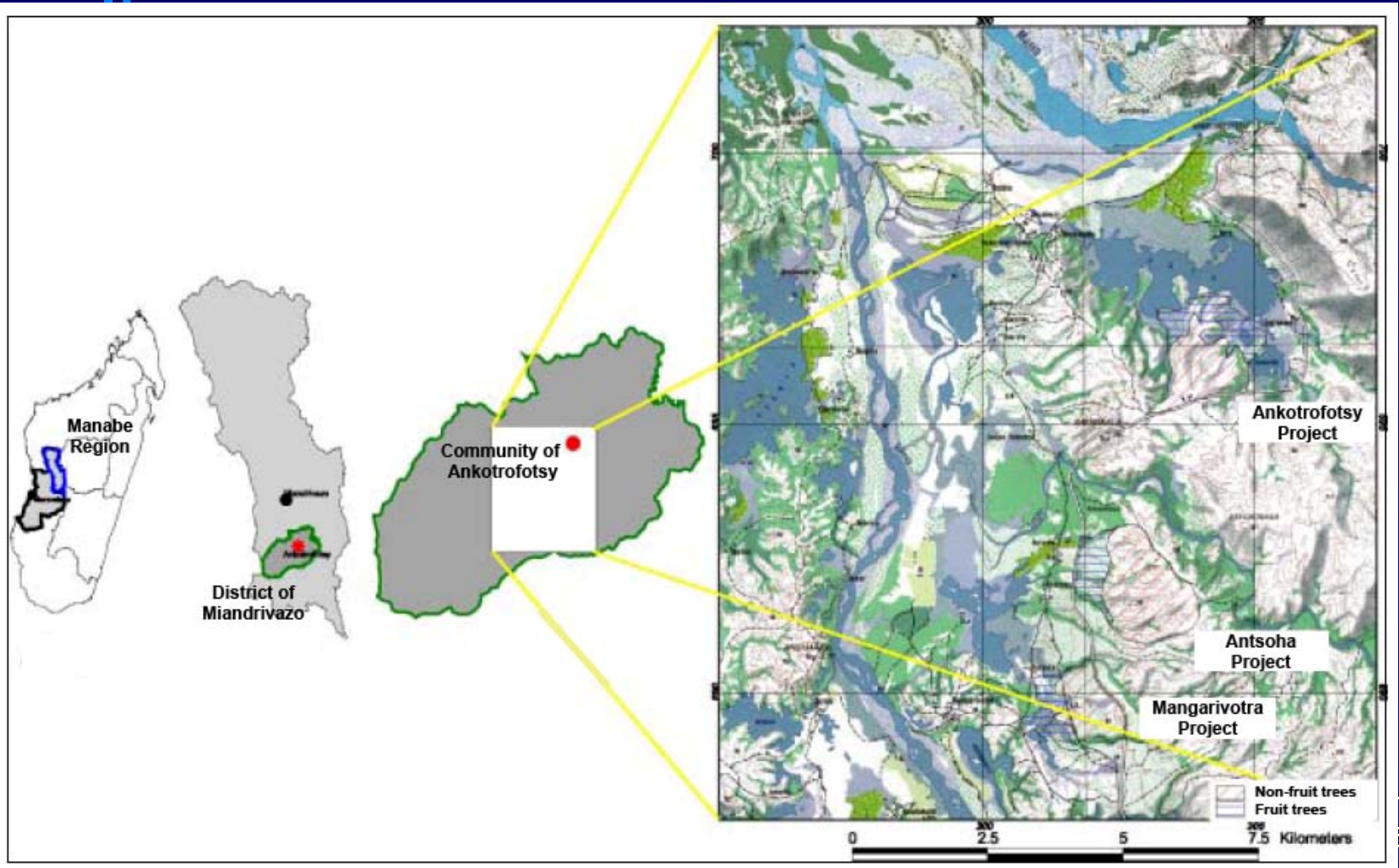


Antsoha Community Association Reforestation Project

small scale A/R CDM
Madagascar



Location





Project description

- Reforestation of 415 ha of savanna with a mixture of indigenous, exotic and fruit trees
- Baseline situation: Savannah with occasional grazing and harvesting of existing trees





Additionality

Barrier Analysis Matrix

Activity	Investment	Institutional	Technological	Local tradition	Prevailing practice	Local ecological conditions	Social conditions	Land tenure
1. Planting of trees in large areas for long term use by a community (project);		✓			✓		✓	✓
2. Planting of trees for landscape restoration;				✓			✓	✓
3. Cultivation of annual crops;						✓		✓
4. Savannah with occasional grazing and harvesting of existing trees;								
5. Mining for precious stones	✓		✓					✓



Proposed planting mix

Species	Percentage
<i>Eucalyptus camaldulensis</i>	15%
<i>Cassia siamea</i>	15%
<i>Azadirachta indica</i>	15%
<i>Albizia lebbek</i>	8%
Native species (<i>Poupartia caffra</i> and <i>Terminalia mantalii</i>)	23%
Mango	15%
Other fruit trees	8%
Total	100%

Carbon potential



Table 3: Estima

Years	Annual estimation of net anthropogenic GHG removals by sinks in tonnes of CO ₂ e
2007	-1,428
2008	-294
2009	2,269
2010	2,346
2011	2,644
2012	3,328
2013	4,253
2014	5,179
2015	5,912
2016	6,410
2017	5,873
2018	5,271
2019	3,922
2020	2,387
2021	2,339
2022	1,743
2023	1,171
2024	1,171
2025	1,130
2026	1,049
Total estimated net anthropogenic GHG removals by sinks (tonnes of CO₂e)	56,675
Total number of crediting years	20
Annual average over the crediting period of estimated net anthropogenic GHG removals by sinks (tonnes of CO₂e)	2,834



Next steps

- Evaluating options for bundling
- Ongoing negotiations with two potential buyers
- Finalizing the PDD and starting validation before end of 2007
- Starting nurseries in 2008